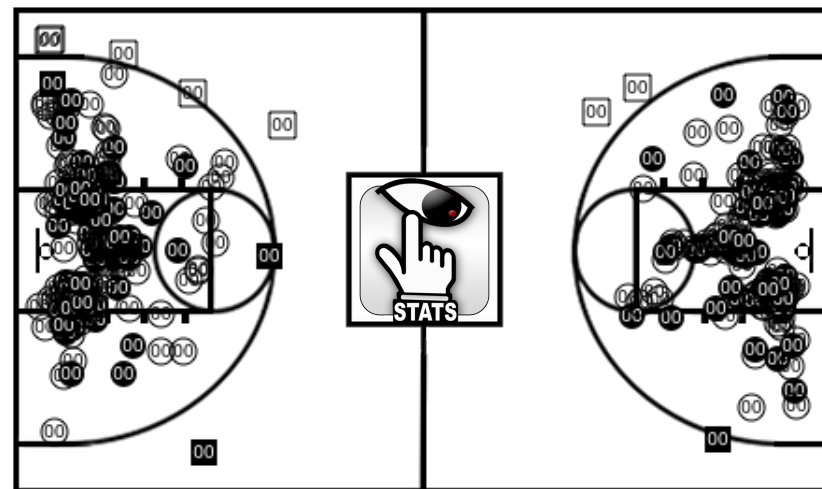




**#00 - Blaise Bentsen**  
**Forward**  
**6'6**  
**225**  
**Freshman**



Date / Opponent	Points	Total FG	%	2pt FG	%	3pt FG	%	Free Throws	%	Reb(O-D)DB	PF(T-F)	T	Ast	Blk	Stl	Charge	Eff
W 62-26 11/6/15 @ Carrollton C	DNP	0/0	0	0/0	0	0/0	0	0/0	0		0	0	0	0	0	0	
L 54-46 11/10/15 Chant	20	8/14	57.1	8/14	57.1	0/0	0	4/6	66.7	13 (5-8)	3	4	2	3	3	0	29
L 65-36 11/17/15 Aubrey Boys	7	3/12	25	3/12	25.0	0/0	0	1/2	50.0	8 (2-6)	0	2	3	3	4	0	13
L 34-55 11/19/15 @ Ponder JV	12	5/10	50	5/10	50.0	0/0	0	2/7	28.6	8 (1-7)	1	0	1	2	1	0	14
W 47-46 11/20/15 @ Saltillo	13	5/8	62.5	5/8	62.5	0/0	0	3/5	60.0	8 (3-5)	3	5	1	2	0	0	14
W 51-62 11/21/15 Bowie JV	19	8/12	66.7	8/12	66.7	0/0	0	3/4	75.0	13 (5-8)	3	4	4	5	2	0	34
W 66-52 11/21/15 @ Slidell	13	5/8	62.5	5/8	62.5	0/0	0	3/3	100.0	11 (5-6)	4	4	3	5	0	1	25
W 41-47 11/23/15 Chess	7	2/6	33.3	2/6	33.3	0/0	0	3/5	60.0	16 (3-13)	0	1	1	1	2	0	20
L 44-74 11/27/15 @ Holliday	14	5/11	45.5	5/11	45.5	0/0	0	4/6	66.7	1 (0-1)	3	2	2	2	2	0	11
W 49-44 11/27/15 @ Romeo Pi	18	8/15	53.3	8/15	53.3	0/0	0	2/2	100.0	11 (5-6)	2	4	2	1	1	0	22
L 59-58 11/28/15 Bruceville-Ec	30	12/16	75	12/16	75.0	0/0	0	6/10	60.0	15 (1-14)	4	6	2	1	4	0	38
W 52-31 11/28/15 @ Wichita Fi	19	8/20	40	8/20	40.0	0/0	0	3/6	50.0	10 (2-8)	3	2	1	4	0	0	17
W 68-59 12/1/15 @ Heritage C.	31	11/24	45.8	11/24	45.8	0/0	0	9/13	69.2	19 (9-10)	2	4	4	1	0	0	34
W 39-32 12/3/15 @ S & S	15	3/10	30	3/10	30.0	0/0	0	9/14	64.3	9 (3-6)	2	3	5	0	1	0	15
L 64-42 12/4/15 McKinney Chr	11	4/12	33.3	4/12	33.3	0/0	0	3/4	75.0	7 (2-5)	3	1	1	1	1	0	11
W 43-56 12/5/15 Sam Rayburn	27	11/19	57.9	11/19	57.9	0/0	0	5/9	55.6	17 (6-11)	2	2	3	0	2	0	35
L 49-41 12/8/15 Bells	18	8/13	61.5	8/12	66.7	0/1	0	2/4	50.0	7 (2-5)	2	0	1	1	0	0	20
W 71-33 12/11/15 @ Lakehill P	9	4/7	57.1	4/7	57.1	0/0	0	1/1	100.0	5 (0-5)	0	1	7	2	3	0	22
L 46-64 12/21/15 @ Tom Bean	15	7/16	43.8	6/15	40.0	1/1	100.0	0/0	0	11 (3-8)	3	6	3	1	2	0	17
L 28-74 12/28/15 @ Anna	12	5/9	55.6	5/9	55.6	0/0	0	2/2	100.0	10 (1-9)	2	3	2	0	0	0	17
L 59-49 12/29/15 Pittsburgh	20	8/16	50	8/16	50.0	0/0	0	4/4	100.0	12 (5-7)	3	6	1	1	0	0	20
L 42-64 12/30/15 @ North Hop	12	5/16	31.2	5/15	33.3	0/1	0	2/5	40.0	17 (6-11)	3	0	1	1	0	0	17
L 52-56 1/8/16 @ Denton Calv.	5	2/3	66.7	2/3	66.7	0/0	0	1/2	50.0	1 (1-0)	5	0	0	1	1	0	6
W 37-58 1/12/16 Watauga	18	7/14	50	7/13	53.8	0/1	0	4/4	100.0	11 (1-10)	3	3	1	3	1	0	24
W 56-46 1/15/16 @ FW Bethes	17	7/13	53.8	7/13	53.8	0/0	0	3/6	50.0	10 (2-8)	2	1	2	4	1	0	24
W 44-45 1/22/16 Muenster Sac	17	6/14	42.9	5/12	41.7	1/2	50.0	4/7	57.1	6 (1-5)	3	0	3	0	2	0	17
W 47-51 1/26/16 Denton Calva	24	10/18	55.6	10/17	58.8	0/1	0	4/6	66.7	13 (5-8)	1	4	2	1	5	0	31
L 51-55 1/29/16 @ Watauga	27	7/15	46.7	7/15	46.7	0/0	0	13/16	81.2	12 (2-10)	3	3	2	1	2	1	30
W 47-79 2/2/16 FW Bethesda	15	6/11	54.5	6/11	54.5	0/0	0	3/4	75.0	7 (5-2)	1	0	2	1	3	0	22
W 41-32 2/9/16 @ Muenster S.	16	2/3	66.7	2/3	66.7	0/0	0	12/16	75.0	5 (2-3)	2	5	2	2	3	0	18
W 38-67 2/19/16 Dallas Cambr	35	14/23	60.9	14/22	63.6	0/1	0	7/10	70.0	9 (2-7)	3	2	2	2	2	0	36
W 43-68 2/23/16 Tyler Street C	27	10/16	62.5	9/15	60.0	1/1	100.0	6/8	75.0	8 (3-5)	1	3	3	3	0	0	30
W 51-63 2/27/16 Desoto Cante	20	5/9	55.6	5/8	62.5	0/1	0	10/10	100.0	19 (4-15)	1	5	1	6	2	0	39
L 65-36 3/4/16 Austin Waldorf	16	7/14	50	6/13	46.2	1/1	100.0	1/2	50.0	9 (4-5)	4	3	0	0	3	0	17

GP:33 GS:33	<b>Totals</b>	<b>579</b>	<b>218/427</b>	<b>51.1</b>	<b>214/416</b>	<b>51.4</b>	<b>4/11</b>	<b>36.4</b>	<b>139/203</b>	<b>68.5</b>	<b>338 (101-237)</b>	<b>77</b>	<b>89</b>	<b>70</b>	<b>61</b>	<b>53</b>	<b>2</b>	<b>739</b>
	<b>Averages</b>	<b>17.5</b>	<b>6.6/12.9</b>	<b>51.2</b>	<b>6.5/12.6</b>	<b>51.6</b>	<b>0.1/0.3</b>	<b>33.3</b>	<b>4.2/6.2</b>	<b>67.7</b>	<b>10.3 (3.1-7.2)</b>	<b>2.3</b>	<b>2.7</b>	<b>2.1</b>	<b>1.8</b>	<b>1.6</b>	<b>0.1</b>	<b>22.3</b>